

Merrygill Drive, Eaglescliffe



£1,100 Per Calendar Month

IH INGLEBY HOMES





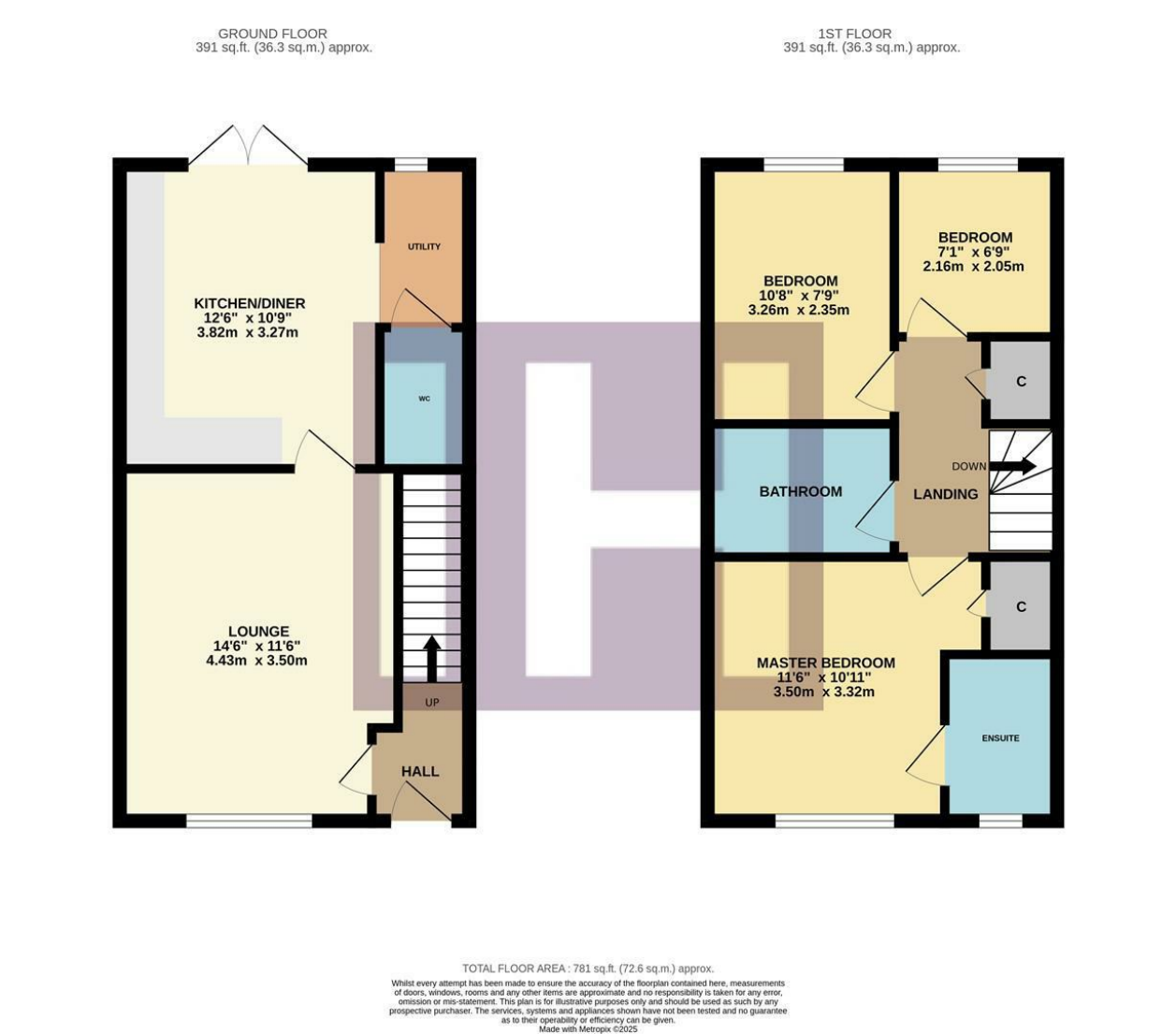
'Turn-Key' ready, this impressive and BRAND NEW three bedroom property is 'Miller Homes' built and situated on the very desirable 'Pearwood Gardens' development, tucked just off Durham Lane.

Stylish and modern, the accommodation comprises an entrance hall, spacious lounge and fantastic kitchen/diner with integrated appliances, utility and cloakroom/WC off, on the ground floor, with utility and cloakroom/WC off. The first floor delivers three bedrooms, 'Master' with ensuite, and separate modern bathroom.

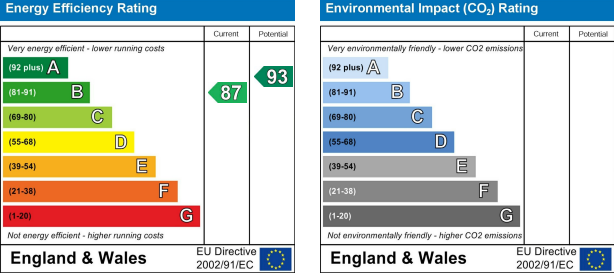


A block-paved drive allows off-road parking and runs along side the front garden, whilst the rear garden is fully fence enclosed and laid mainly to lawn.

The Layout



Council Tax Band: C
Tenure:



The Location





- Brand new and 'Turn Key' ready
- Impressive 'Miller' built design
- Desirable 'Pearwood Gardens' development in Eaglescliffe
- Spacious lounge, separate modern kitchen/diner
- 'Master' bedroom with ensuite
- Early viewing essential
- RENT - £1100 PCM
- BOND - £1269.23
- HOLDING FEE - £253.84
- COUNCIL TAX BAND C